



ReFarm

**Interreg VI A project Idea
Priority 1: Innovation**

Philipp Kuntke
Scientific Project Managers



combining scientific excellence with commercial relevance

Problem

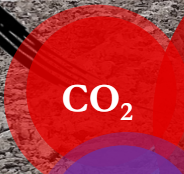
Import
Feed and
Food
Additives

**Grassland/
Arable land**

Livestock

**Phosphate
rock and
Synthetic
Nitrogen**

**Excessive
accumulation of
nutrients in
soil and
dispersion of
pollutants in
surface water
and air**



Vision

Import
Feed and
Food
Additives

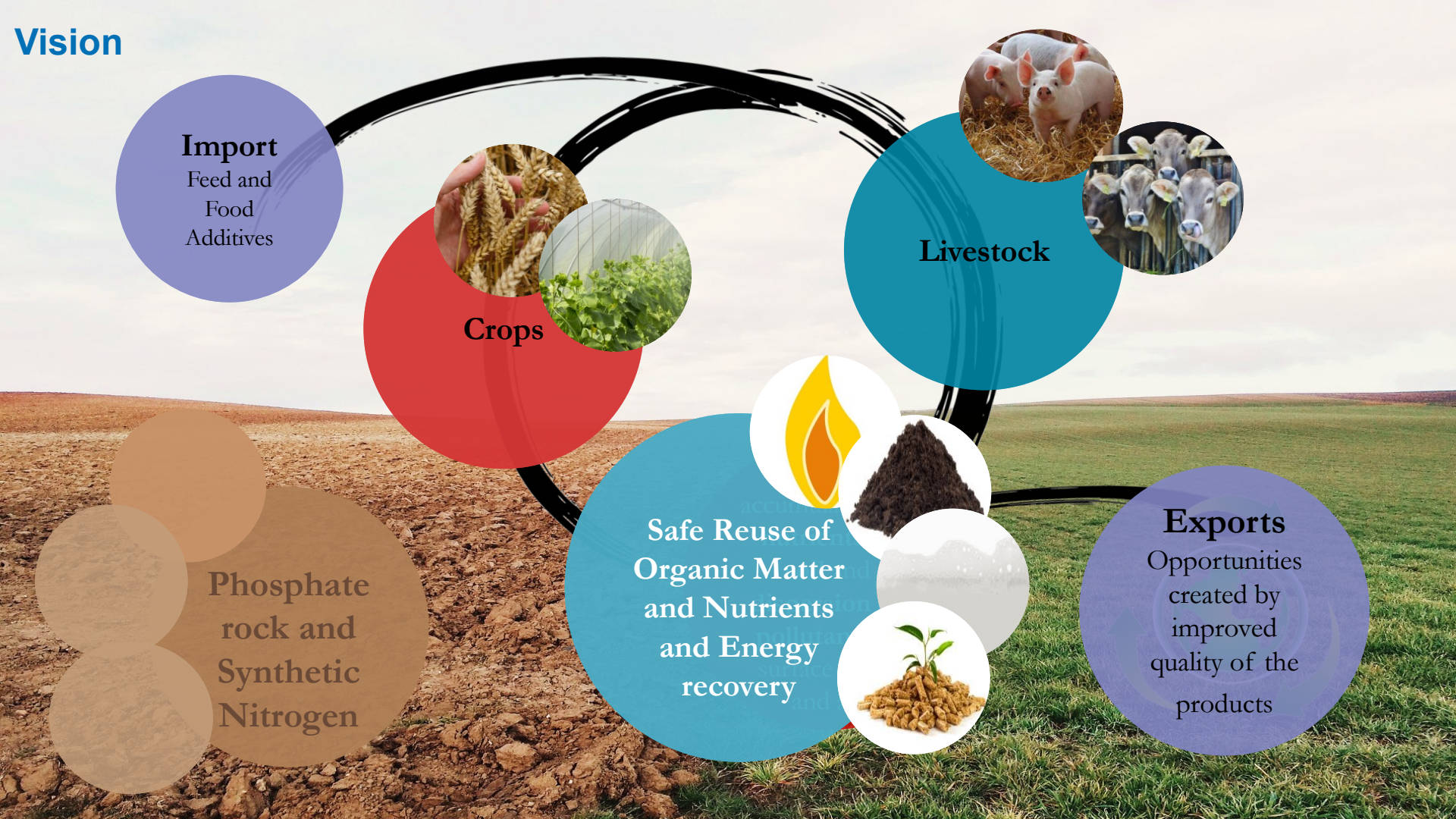
Crops

Livestock

**Safe Reuse of
Organic Matter
and Nutrients
and Energy
recovery**

Exports
Opportunities
created by
improved
quality of the
products

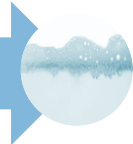
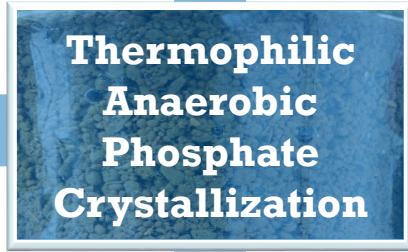
**Phosphate
rock and
Synthetic
Nitrogen**



Biogas



Manure



Environmental Impact Assessment

- GHG Emissions from Production to Application
- Loss of Nutrients, leaching of Micropollutants and spread of Microbial Resistance
- Soil and Water quality around the selected sites



Horticulture



Crop Production



Nutrients Demanding Crops



Lanscaping

Expected impact

- *Charter sustainably cross-border NL and DE relevant material flows.*
- *Create alternative business models.*
- *Reduce Greenhouse Gas (GHG) emissions, nutrients and micropollutants leaching*
- *Enhance circularity of resources*
- *Improve soil health*

Join us, we are looking for innovative

- LCA/LCC partner
- SMEs
- Test & demonstration location
- End user(s)

Contact: philipp.kuntke@wetsus.nl &
valentina.sechi@wetsus.nl

Thank you for your attention