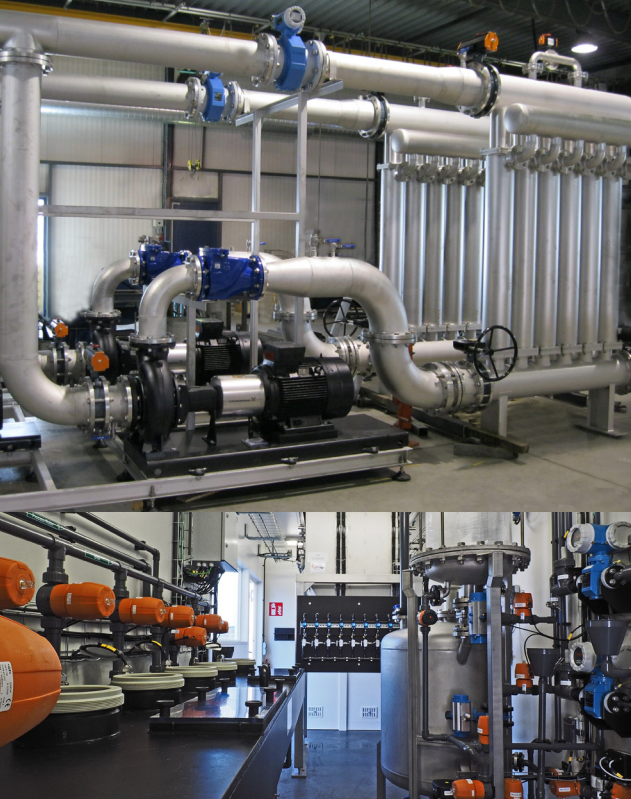


RWB WATER SERVICES



RWB WATER SERVICES

RWB specializes in the design, construction and installation of complete (waste) water treatment plants in a wide range of sectors (industrial/ municipal wastewater treatment and process/potable water treatment). Whether your project calls for a conventional treatment process or requires an innovative concept, you can rest assured that our dedicated team of process design and project engineers will deliver a suitable and sustainable solution for the specific needs of your project.

Ambachtstraat 20
7609 RA Almelo
The Netherlands

T +31 546 54 50 20
E r.elferink@rwbalmelo.nl

www.rwbalmelo.nl

Contact person:
René Elferink

TECHNOLOGY SEGMENT:
INDUSTRIAL & MUNICIPAL WASTE WATER TREATMENT
PROCESS WATER TREATMENT